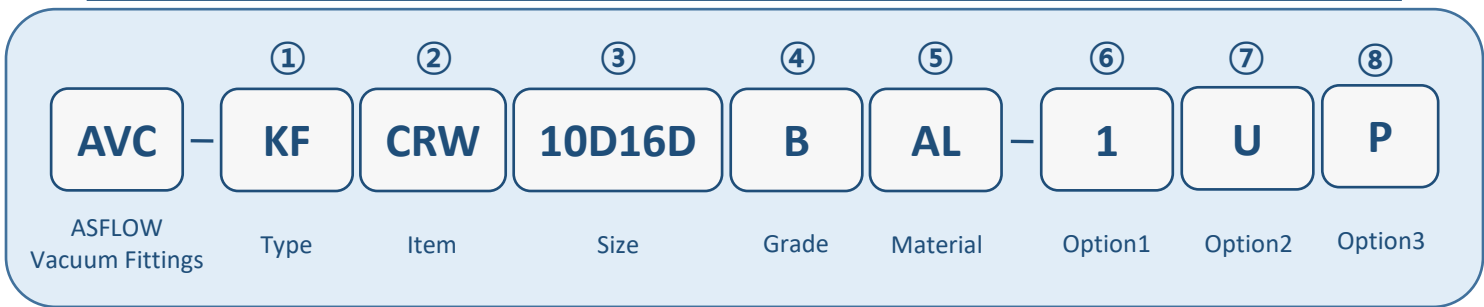


# ISO-KF Small Flange Components

## Connection Elements

### HOW TO ORDER



①	Type
KF	ISO-KF Small Flange Components

②	Item
CRW	Clamping Ring Wing Nut
CRH	Clamping Ring Hex Nut
CG	Claw Grip

③	Size
10D16D	NW 10 - NW 16
10D50D	NW 10 - NW 50
20D25D	NW 20 - NW 25
32D40D	NW 32 - NW 40
50D	NW 50

④	Grade
B	Natural (General)
E	EP Grade

⑤	Material
SS	Stainless steel 304
AL	Aluminum 6061

⑥	Option1
N	No Option
1	Claw Grip_SUS Bolt & Washer

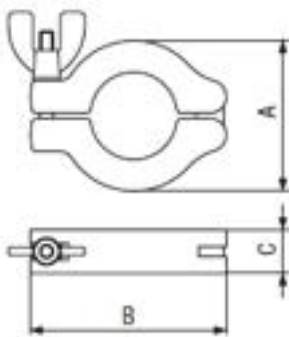
⑦	Option2
U	UCV Cleaning
H	HV Cleaning

⑧	Option3
P	Provide as 1Pcs
S	Provide as 4Pcs=1Set

# ISO-KF Small Flange Components

## Connection Elements

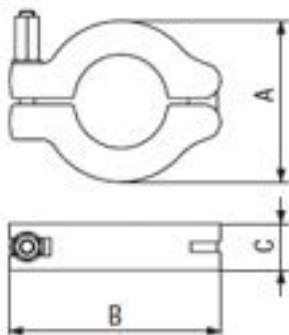
### Clamping Ring Wing Nut



NW	Part No. (Basic)	A	B	C		
10 - 16	AVC-KFCRW10D16DBAL	44.7	67.7	18.5		
20 - 25	AVC-KFCRW20D25DBAL	51.9	73.2	18.5		
32 - 40	AVC-KFCRW32D40DBAL	69.8	91	19.5		
50	AVC-KFCRW50DBAL	92.2	123	25		

- \* Clamping ring & Nut : Aluminum 6061
- Bolt : Stainless steel 304
- \* Option 1 : N (No Option)
- \* Option 2 : U (UCV Cleaning)  
H (HV Cleaning)
- \* Option 3 : P (Provide as 1Pcs)  
S (Provide as 4Pcs=1Set)

### Clamping Ring Hex Nut



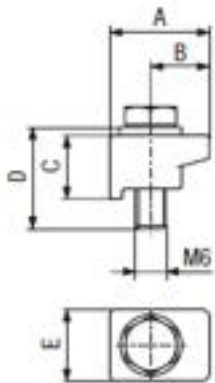
NW	Part No. (Basic)	A	B	C		
10 - 16	AVC-KFCRH10D16DBAL	44.7	67.7	18.5		
20 - 25	AVC-KFCRH20D25DBAL	51.9	73.2	18.5		
32 - 40	AVC-KFCRH32D40DBAL	69.8	91	19.5		
50	AVC-KFCRH5DBAL	92.2	123	25		

- \* Clamping ring & Nut : Aluminum 6061
- Bolt : Stainless steel 304
- \* Option 1 : N (No Option)
- \* Option 2 : U (UCV Cleaning)  
H (HV Cleaning)
- \* Option 3 : P (Provide as 1Pcs)  
S (Provide as 4Pcs=1Set)

# ISO-KF Small Flange Components

## Connection Elements

### Claw Grip



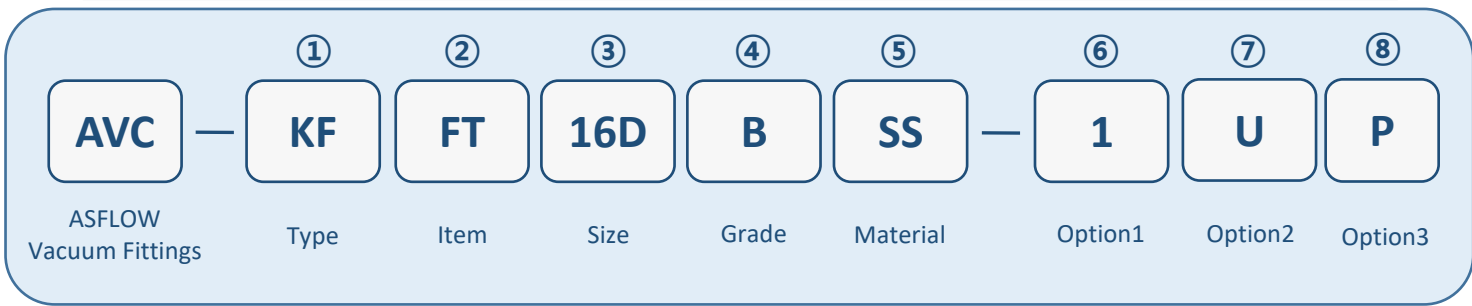
NW	Part No. (Basic)	A	B	C	D	E
10 - 50	AVC-KFCG10D50DBAL	19.5	11.5	12.5	20	14

- \* Claw : Aluminum 6061 & Stainless steel 304
- Bolt & Washer : Steel nickel plated
- \* Option 1 : 1 (Claw Grip\_SUS Bolt & Washers)
- \* Option 2 : U (UCV Cleaning)  
H (HV Cleaning)
- \* Option 3 : P (Provide as 1Pcs)  
S (Provide as 4Pcs=1Set)

# ISO-KF Small Flange Components

## Flanges

### HOW TO ORDER



①	Type
KF	ISO-KF Small Flange Components

②	Item
BF	Blank Flange
FT	Flange With Tube
WF	Welding Flange

③	Size
16D	NW 16
25D	NW 25
40D	NW 40
50D	NW 50

④	Grade
B	Natural (General)
E	EP Grade

⑤	Material
SS	Stainless steel 304

⑥	Option1
N	No Option
1	Flange With Tube, Short 20L
3	Flange With Tube, Long 70L

⑦	Option2
U	UCV Cleaning
H	HV Cleaning

⑧	Option3
P	Provide as 1Pcs
S	Provide as 4Pcs=1Set

# ISO-KF Small Flange Components

## Flanges

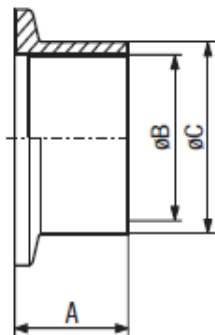
### Blank Flange



NW	Part No. (Basic)	A				
16	AVC-KFBF16DBSS	5				
25	AVC-KFBF25DBSS	5				
40	AVC-KFBF40DBSS	5				
50	AVC-KFBF50DBSS	5				

- \* Stainless steel 304
- \* Option 1 : N (No Option)
- \* Option 2 : U (UCV Cleaning)  
H (HV Cleaning)
- \* Option 3 : P (Provide as 1Pcs)  
S (Provide as 4Pcs=1Set)

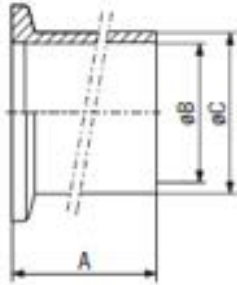
### Flange With Tube, Short



NW	Part No. (Basic)	A	B	C		
16	AVC-KFFT16DBSS-1	20	15.75	19.05		
25	AVC-KFFT25DBSS-1	20	22.1	25.4		
40	AVC-KFFT40DBSS-1	20	34.8	38.1		
50	AVC-KFFT50DBSS-1	20	47.5	50.8		

- \* Stainless steel 304
- \* Option 1 : 1 (Flange With Tube, Short\_20L)
- \* Option 2 : U (UCV Cleaning)  
H (HV Cleaning)
- \* Option 3 : P (Provide as 1Pcs)  
S (Provide as 4Pcs=1Set)

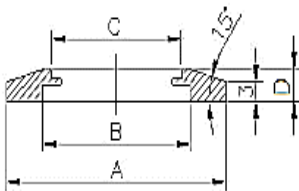
**Flange With Tube, Long**



NW	Part No. (Basic)	A	B	C		
16	AVC-KFFT16DBSS-3	70	15.75	19.05		
25	AVC-KFFT25DBSS-3	70	22.1	25.4		
40	AVC-KFFT40DBSS-3	70	34.8	38.1		
50	AVC-KFFT50DBSS-3	70	47.5	50.8		

- \* Stainless steel 304
- \* Option 1 : 3 (Flange With Tube, Long\_70L)
- \* Option 2 : U (UCV Cleaning)  
H (HV Cleaning)
- \* Option 3 : P (Provide as 1Pcs)  
S (Provide as 4Pcs=1Set)

**Welding Flange**



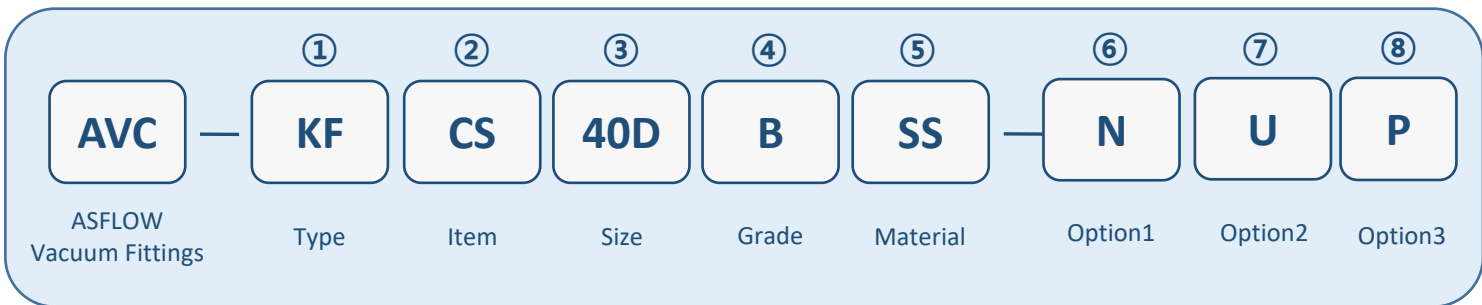
NW	Part No. (Basic)	A	B	C	D	
16	AVC-KFWF16DBSS	30	17.2	19.2	4.38	
25	AVC-KFWF25DBSS	40	26.5	25.6	4.87	
40	AVC-KFWF40DBSS	55	41.5	38.4	5	
50	AVC-KFWF50DBSS	75	52.2	51.1	5	

- \* Stainless steel 304
- \* Option 1 : N (No Option)
- \* Option 2 : U (UCV Cleaning)  
H (HV Cleaning)
- \* Option 3 : P (Provide as 1Pcs)  
S (Provide as 4Pcs=1Set)

# ISO-KF Small Flange Components

## Pipe Fittings

### HOW TO ORDER



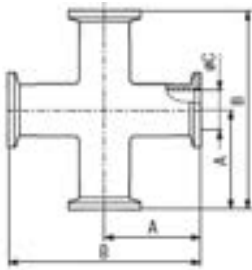
①	Type
KF	ISO-KF Small Flange Components
②	Item
CS	Cross
90E	Elbow 90°
45E	Elbow 45°
IP	Intermediate Piece
ET	Tee
③	Size
16D	NW 16
25D	NW 25
40D	NW 40
50D	NW 50

④	Grade
B	Natural (General)
E	EP Grade
⑤	Material
SS	Stainless steel 304
⑥	Option1
N	No Option
⑦	Option2
U	UCV Cleaning
H	HV Cleaning
⑧	Option3
P	Provide as 1Pcs
S	Provide as 4Pcs=1Set

# ISO-KF Small Flange Components

## Pipe Fittings

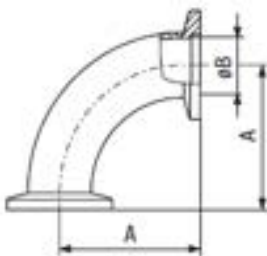
### Cross



NW	Part No. (Basic)	A	B	C		
16	AVC-KFCS16DBSS	40	80	15.75		
25	AVC-KFCS25DBSS	50	100	22.1		
40	AVC-KFCS40DBSS	65	130	34.8		
50	AVC-KFCS50DBSS	70	140	47.5		

- \* Stainless steel 304
- \* Option 1 : N (No Option)
- \* Option 2 : U (UCV Cleaning)  
H (HV Cleaning)
- \* Option 3 : P (Provide as 1Pcs)  
S (Provide as 4Pcs=1Set)

### Elbow 90°



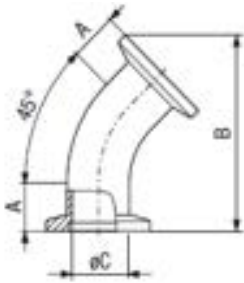
\* C = Bend Radius

NW	Part No. (Basic)	A	B	C		
16	AVC-KF90E16DBSS	40	15.75	28.6		
25	AVC-KF90E25DBSS	50	22.1	38.1		
40	AVC-KF90E40DBSS	65	34.8	57.2		
50	AVC-KF90E50DBSS	80	47.5	76.2		

- \* Stainless steel 304
- \* Option 1 : N (No Option)
- \* Option 2 : U (UCV Cleaning)  
H (HV Cleaning)
- \* Option 3 : P (Provide as 1Pcs)  
S (Provide as 4Pcs=1Set)



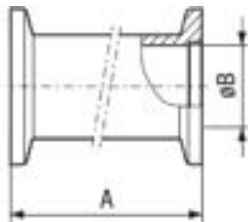
**Elbow 45°**



NW	Part No. (Basic)	A	B	C		
16	AVC-KF45E16DBSS	6	54.4	15.75		
25	AVC-KF45E25DBSS	12	68.3	22.1		
40	AVC-KF45E40DBSS	13	87.9	34.8		

- \* Stainless steel 304
- \* Option 1 : N (No Option)
- \* Option 2 : U (UCV Cleaning)  
H (HV Cleaning)
- \* Option 3 : P (Provide as 1Pcs)  
S (Provide as 4Pcs=1Set)

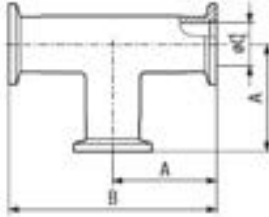
**Intermediate Piece**



NW	Part No. (Basic)	A	B			
16	AVC-KFIP16DBSS	80	15.75			
25	AVC-KFIP25DBSS	100	22.1			
40	AVC-KFIP40DBSS	130	34.8			
50	AVC-KFIP50DBSS	140	47.5			

- \* Stainless steel 304
- \* Option 1 : N (No Option)
- \* Option 2 : U (UCV Cleaning)  
H (HV Cleaning)
- \* Option 3 : P (Provide as 1Pcs)  
S (Provide as 4Pcs=1Set)

**Tee**



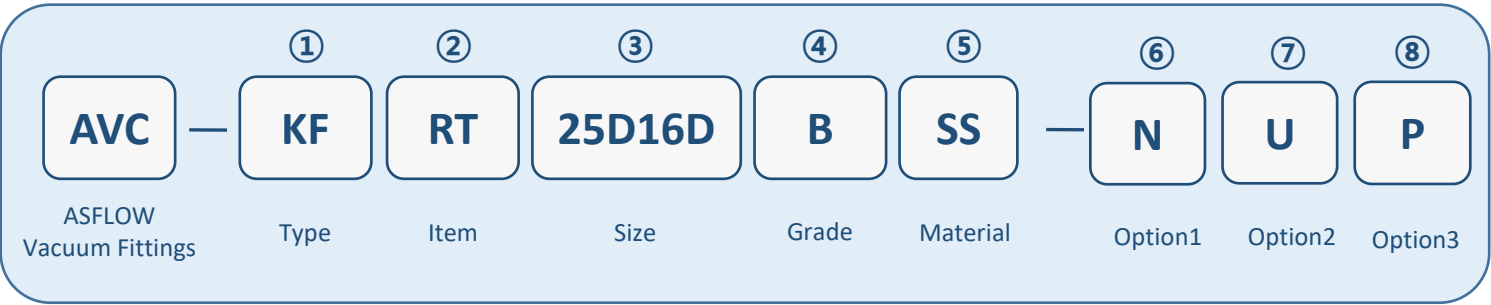
NW	Part No. (Basic)	A	B	C		
16	AVC-KFET16DBSS	40	80	15.75		
25	AVC-KFET25DBSS	50	100	22.1		
40	AVC-KFET40DBSS	65	130	34.8		
50	AVC-KFET50DBSS	70	140	47.5		

- \* Stainless steel 304
- \* Option 1 : N (No Option)
- \* Option 2 : U (UCV Cleaning)  
H (HV Cleaning)
- \* Option 3 : P (Provide as 1Pcs)  
S (Provide as 4Pcs=1Set)

# ISO-KF Small Flange Components

## Pipe Fittings - Reducer

### HOW TO ORDER



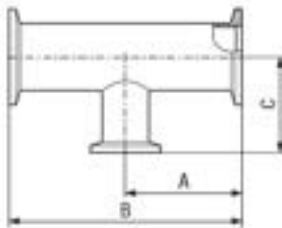
①	Type
KF	ISO-KF Small Flange Components
②	Item
RT	Reducing Tee
RD	Reducer
③	Size
25D16D	NW 25 - NW 16
40D16D	NW 40 - NW 16
40D25D	NW 40 - NW 25
50D16D	NW 50 - NW 16
50D25D	NW 50 - NW 25
50D40D	NW 50 - NW 40

④	Grade
B	Natural (General)
E	EP Grade
⑤	Material
SS	Stainless steel 304
⑥	Option1
N	No Option
⑦	Option2
U	UCV Cleaning
H	HV Cleaning
⑧	Option3
P	Provide as 1Pcs
S	Provide as 4Pcs=1Set

# ISO-KF Small Flange Components

## Pipe Fittings - Reducer

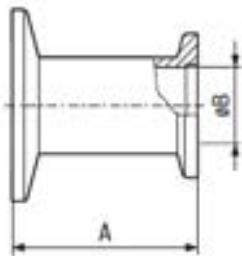
### Reducing Tee



NW	Part No. (Basic)	A	B	C		
25 / 16	AVC-KFRT25D16DBSS	50	100	40		
40 / 16	AVC-KFRT40D16DBSS	65	130	40		
40 / 25	AVC-KFRT40D25DBSS	65	130	50		
50 / 16	AVC-KFRT50D16DBSS	70	140	50		
50 / 25	AVC-KFRT50D25DBSS	70	140	65		
50 / 40	AVC-KFRT50D40DBSS	70	140	65		

- \* Stainless steel 304
- \* Option 1 : N (No Option)
- \* Option 2 : U (UCV Cleaning)  
H (HV Cleaning)
- \* Option 3 : P (Provide as 1Pcs)  
S (Provide as 4Pcs=1Set)

### Reducer



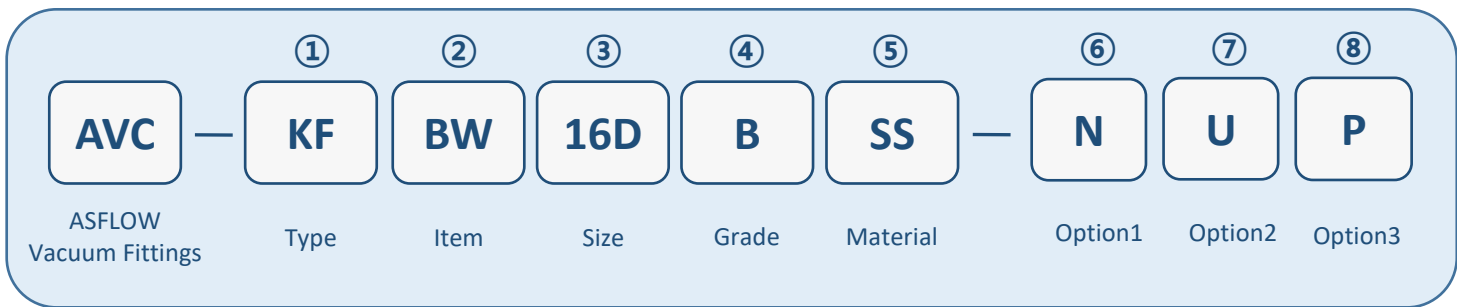
NW	Part No. (Basic)	A	B			
25 / 16	AVC-KFRD25D16DBSS	40	15.75			
40 / 16	AVC-KFRD40D16DBSS	40	15.75			
40 / 25	AVC-KFRD40D25DBSS	40	22.1			
50 / 16	AVC-KFRD50D16DBSS	40	15.75			
50 / 25	AVC-KFRD50D25DBSS	40	22.1			
50 / 40	AVC-KFRD50D40DBSS	40	34.8			

- \* Stainless steel 304
- \* Option 1 : N (No Option)
- \* Option 2 : U (UCV Cleaning)  
H (HV Cleaning)
- \* Option 3 : P (Provide as 1Pcs)  
S (Provide as 4Pcs=1Set)

# ISO-KF Small Flange Components

## Bellows

### HOW TO ORDER



①	Type
KF	ISO-KF Small Flange Components

②	Item
BW	Bellows

③	Size
16D	NW 16
25D	NW 25
40D	NW 40
50D	NW 50

④	Grade
B	Natural (General)
E	EP Grade

⑤	Material
SS	Stainless steel 304

⑥	Option1
N	No Option

⑦	Option2
U	UCV Cleaning
H	HV Cleaning

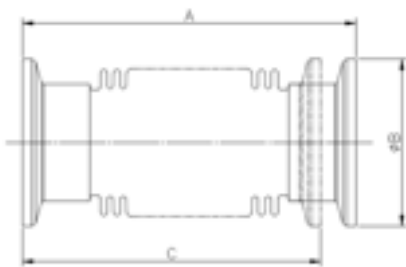
  

⑧	Option3
P	Provide as 1Pcs
S	Provide as 4Pcs=1Set

# ISO-KF Small Flange Components

## Bellows

**Bellows**



\* A = Unstressed length  
 \* C = stressed length

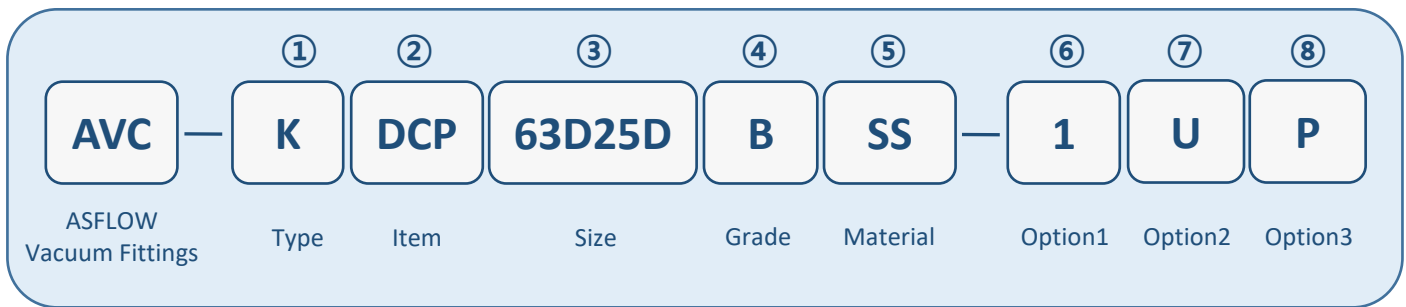
NW	Part No. (Basic)	A	B	C	REMARK
16	AVC-KFBW16DBSS	70	30	58	
25	AVC-KFBW25DBSS	80	40	65	
40	AVC-KFBW40DBSS	100	55	79	
50	AVC-KFBW50DBSS	100	75	79	
50	AVC-KFBW50DBSS-4.22	107	75	84	

- \* Flanges : Stainless steel 304
- Bellows : Stainless steel 304
- \* Option 1 : N (No Option)
- \* Option 2 : U (UCV Cleaning)  
H (HV Cleaning)
- \* Option 3 : P (Provide as 1Pcs)  
S (Provide as 4Pcs=1Set)

# ISO-K Clamp Flange Components

## Connection Elements

### HOW TO ORDER



①	Type
---	------

K	ISO-K Clamp Flange Components
---	-------------------------------

②	Item
---	------

DCP	Double Clamp
-----	--------------

SCP	Single Clamp
-----	--------------

③	Size
---	------

63D100D	NW 63 - NW 100
---------	----------------

63D250D	NW 63 - NW 250
---------	----------------

④	Grade
---	-------

B	Natural (General)
---	-------------------

E	EP Grade
---	----------

⑤	Material
---	----------

SS	Stainless steel 304
----	---------------------

AL	Aluminum
----	----------

⑥	Option1
---	---------

1	Steel nickel plated M10 Bolt, W 19mm
---	--------------------------------------

2	Steel nickel plated M10 Bolt, W 21mm
---	--------------------------------------

3	Steel nickel plated M8 Bolt, W 15mm
---	-------------------------------------

4	Stainless steel 304 M10 Bolt, W 19mm
---	--------------------------------------

5	Stainless steel 304 M10 Bolt, W 21mm
---	--------------------------------------

6	Stainless steel 304 M8 Bolt, W 15mm
---	-------------------------------------

7	Special Order : Option #6_F 23.5mm
---	------------------------------------

⑦	Option2
---	---------

U	UCV Cleaning
---	--------------

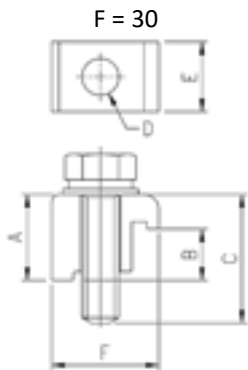
H	HV Cleaning
---	-------------

⑧	Option3
---	---------

P	Provide as 1Pcs
---	-----------------

S	Provide as 4Pcs=1Set
---	----------------------

**Single Clamp**



NW	Part No. (Basic)	A	B	C	D	E	F
63 - 250	AVC-KSCP63D250DBSS-1	23.3	13.9	35	10.8	19	30
63 - 250	AVC-KSCP63D250DBSS-2	23.3	13.9	35	10.8	21	30
63 - 250	AVC-KSCP63D250DBSS-4	23.3	13.9	35	10.8	19	30
63 - 250	AVC-KSCP63D250DBSS-5	23.3	13.9	35	10.8	21	30

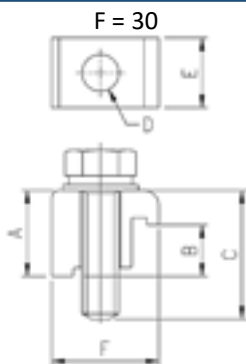
\* Clamp : Stainless steel 304  
 Bolt & Washer : Steel nickel plated or Stainless steel 304

\* Option 1 : 1 (Steel nickel plated M10 Bolt & Washer)  
 2 (Steel nickel plated M10 Bolt & Washer)  
 4 (Option #1\_ Stainless steel 304 M10 Bolt & Washer)  
 5 (Option #2\_ Stainless steel 304 M10 Bolt & Washer)

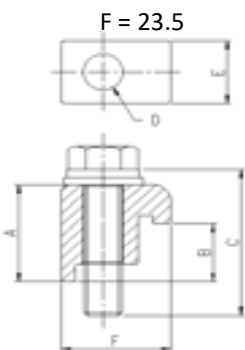
\* Option 2 : U (UCV Cleaning)  
 H (HV Cleaning)

\* Option 3 : P (Provide as 1Pcs)  
 S (Provide as 4Pcs=1Set)

**Single Clamp**



NW	Part No. (Basic)	A	B	C	D	E	F
63 - 100	AVC-KSCP63D100DBSS-3	23.3	13.9	35	8.5	15	30
63 - 100	AVC-KSCP63D100DBSS-6	23.3	13.9	35	8.5	15	30
63 - 100	AVC-KSCP63D100DBSS-7	23.3	13.9	35	8.5	15	23.5



\* Clamp : Stainless steel 304  
 Bolt & Washer : Steel nickel plated or Stainless steel 304  
 \* F = 23.5 (Special Order : For compatibility with other manufacturers' products)

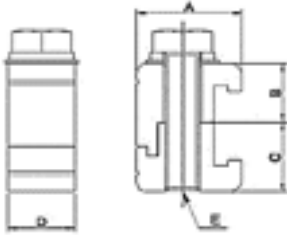
\* Option 1 : 3 (Steel nickel plated M8 Bolt & Washer)  
 6 (Option #3\_ Stainless steel 304 M8 Bolt & Washer)  
 7 \* Special Order (Stainless steel 304 M8 Bolt & Washer)  
 \* F = 23.5 (For compatibility with other manufacturers' products)

\* Option 2 : U (UCV Cleaning)  
 H (HV Cleaning)

\* Option 3 : P (Provide as 1Pcs)  
 S (Provide as 4Pcs=1Set)



**Double Clamp**



NW	Part No. (Basic)	A	B	C	D	E
63 - 250	AVC-KDCP63D250DBSS-1	30	19	22.5	19	M10
63 - 250	AVC-KDCP63D250DBSS-2	30	19	22.5	21	M10

\* Clamp : Stainless steel 304 & Aluminum 6061  
 Bolt & Washer : Steel nickel plated & Stainless steel 304

\* Option 1 : 1 (Steel nickel plated M10 Bolt & Washer)  
 2 (Steel nickel plated M10 Bolt & Washer)  
 4 (Option #1\_Stainless steel 304 M10 Bolt & Washer)  
 5 (Option #2\_Stainless steel 304 M10 Bolt & Washer)

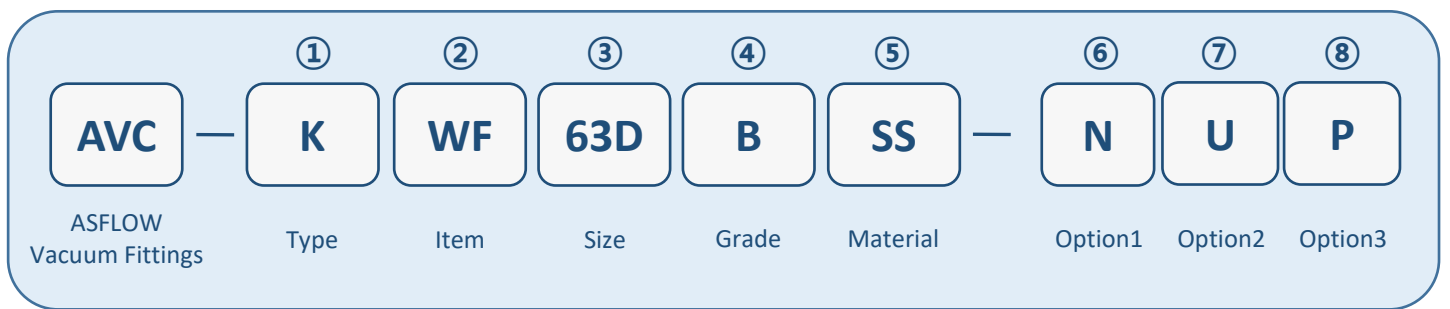
\* Option 2 : U (UCV Cleaning)  
 H (HV Cleaning)

\* Option 3 : P (Provide as 1Pcs)  
 S (Provide as 4Pcs=1Set)

# ISO-K Clamp Flange Components

## Flanges

### HOW TO ORDER



①	Type
K	ISO-K Clamp Flange Components

②	Item
WF	Welding Flange
BF	Blank Flange

③	Size
63D	NW 63
80D	NW 80
100D	NW 100
160D	NW 160
200D	NW 200
250D	NW 250

④	Grade
B	Natural (General)
E	EP Grade

⑤	Material
SS	Stainless steel 304

⑥	Option1
N	No Option

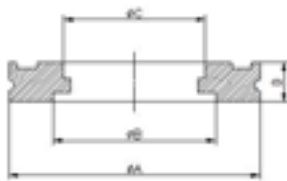
⑦	Option2
U	UCV Cleaning
H	HV Cleaning

⑧	Option3
P	Provide as 1Pcs
S	Provide as 4Pcs=1Set

# ISO-K Clamp Flange Components

## Flanges

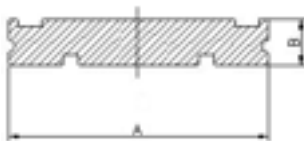
### Welding Flange



NW	Part No. (Basic)	A	B	C	D
63	AVC-KWF63DBSS	95	70.2	64	12
80	AVC-KWF80DBSS	110	83.3	76.8	12
100	AVC-KWF100DBSS	130	102.2	102.2	12
160	AVC-KWF160DBSS	180	153.2	153.2	12
200	AVC-KWF200DBSS	240	212.8	216.9	12
250	AVC-KWF250DBSS	290	261.8	268.5	12

- \* Stainless steel 304
- \* Option 1 : N (No Option)
- \* Option 2 : U (UCV Cleaning)  
H (HV Cleaning)
- \* Option 3 : P (Provide as 1Pcs)  
S (Provide as 4Pcs=1Set)

### Blank Flange



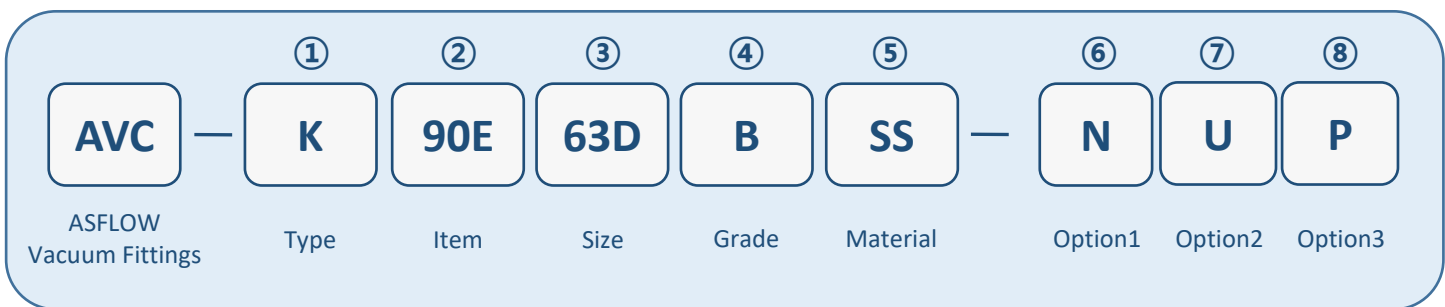
NW	Part No. (Basic)	A	B			
63	AVC-KBF63DBSS	95	12			
80	AVC-KBF80DBSS	110	12			
100	AVC-KBF100DBSS	130	12			
160	AVC-KBF160DBSS	180	12			
200	AVC-KBF200DBSS	240	12			
250	AVC-KBF250DBSS	290	12			

- \* Stainless steel 304
- \* Option 1 : N (No Option)
- \* Option 2 : U (UCV Cleaning)  
H (HV Cleaning)
- \* Option 3 : P (Provide as 1Pcs)  
S (Provide as 4Pcs=1Set)

# ISO-K Clamp Flange Components

## Pipe Fittings

### HOW TO ORDER



①	Type
K	ISO-K Clamp Flange Components

②	Item
90E	Elbow 90°
ET	Tee
CS	Cross

③	Size
63D	NW 63
80D	NW 80
100D	NW 100
160D	NW 160

④	Grade
B	Natural (General)
E	EP Grade

⑤	Material
SS	Stainless steel 304

⑥	Option1
N	No Option

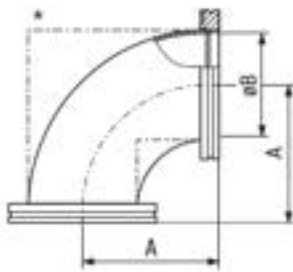
⑦	Option2
U	UCV Cleaning
H	HV Cleaning

⑧	Option3
P	Provide as 1Pcs
S	Provide as 4Pcs=1Set

# ISO-K Clamp Flange Components

## Pipe Fittings

### Elbow 90°

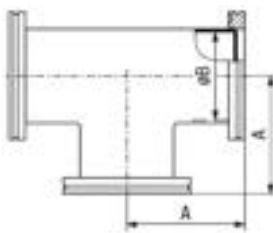


\* C = Bend Radius

NW	Part No. (Basic)	A	B	C		
63	AVC-K90E63DBSS	102.3	60.2	95.3		
80	AVC-K90E80DBSS	121.3	72.9	114.3		
100	AVC-K90E100DBSS	159.4	97.4	152.4		
160	AVC-K90E160DBSS	235.6	146.8	228.6		

- \* Stainless steel 304
- \* Option 1 : N (No Option)
- \* Option 2 : U (UCV Cleaning)  
H (HV Cleaning)
- \* Option 3 : P (Provide as 1Pcs)  
S (Provide as 4Pcs=1Set)

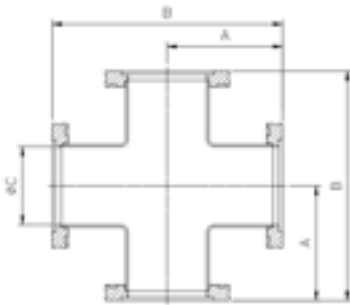
### Tee



NW	Part No. (Basic)	A	B			
63	AVC-KET63DBSS	88	60.2			
80	AVC-KET80DBSS	98	72.9			
100	AVC-KET100DBSS	108	97.4			
160	AVC-KET160DBSS	138	146.8			

- \* Stainless steel 304
- \* Option 1 : N (No Option)
- \* Option 2 : U (UCV Cleaning)  
H (HV Cleaning)
- \* Option 3 : P (Provide as 1Pcs)  
S (Provide as 4Pcs=1Set)

**Cross**



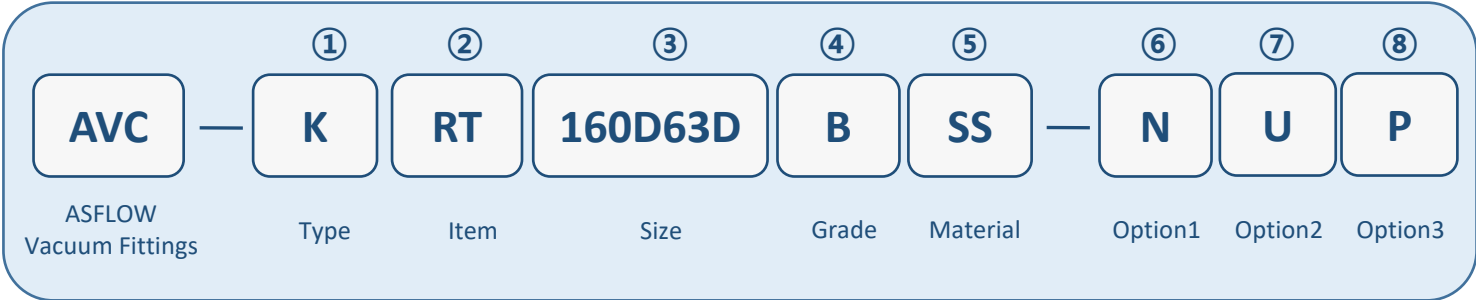
NW	Part No. (Basic)	A	B	C		
63	AVC-KCS63DBSS	88	166	60.2		
80	AVC-KCS80DBSS	98	196	72.9		
100	AVC-KCS100DBSS	108	216	97.4		
160	AVC-KCS160DBSS	138	276	146.8		

- \* Stainless steel 304
- \* Option 1 : N (No Option)
- \* Option 2 : U (UCV Cleaning)  
H (HV Cleaning)
- \* Option 3 : P (Provide as 1Pcs)  
S (Provide as 4Pcs=1Set)

# ISO-K Clamp Flange Components

Pipe Fittings - Reducer

## HOW TO ORDER



①	Type
K	ISO-K Clamp Flange Components

②	Item
RT	Reducing Tee

③	Size
160D63D	NW 160 - NW 63
160D100D	NW 160 - NW 100
250D200D	NW 250 - NW 200

④	Grade
B	Natural (General)
E	EP Grade

⑤	Material
SS	Stainless steel 304

⑥	Option1
N	No Option

⑦	Option2
U	UCV Cleaning
H	HV Cleaning

⑧	Option3
P	Provide as 1Pcs
S	Provide as 4Pcs=1Set

# ISO-K Clamp Flange Components

## Pipe Fittings - Reducer

**Reducing Tee**



NW	Part No. (Basic)	A	B	C		
160 / 63	AVC-KRT160D63DBSS	138	276	130		
160 / 100	AVC-KRT160D100DBSS	138	276	131		
250 / 200	AVC-KRT250D200DBSS	190	380	208		

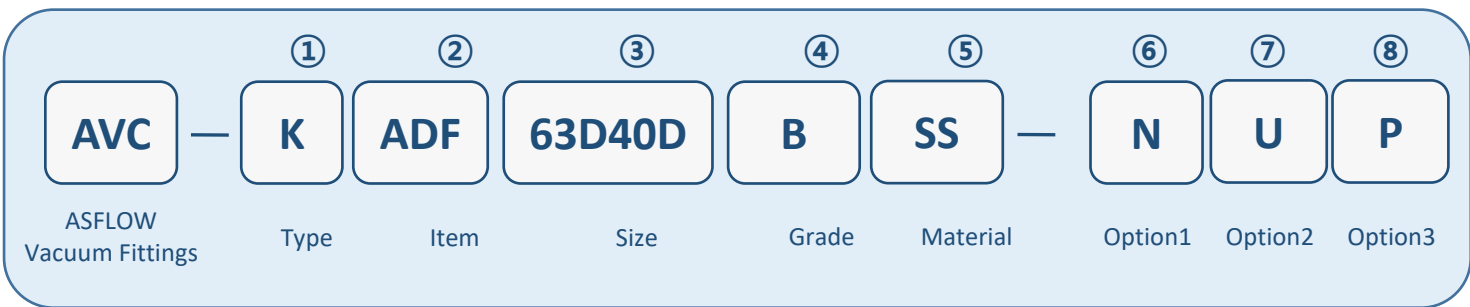
- \* Stainless steel 304
- \* Option 1 : N (No Option)
- \* Option 2 : U (UCV Cleaning)  
H (HV Cleaning)
- \* Option 3 : P (Provide as 1Pcs)  
S (Provide as 4Pcs=1Set)



# ISO-K Clamp Flange Components

## Transition Pieces

### HOW TO ORDER



①	Type
K	ISO-K Clamp Flange Components

②	Item
ADF	Adaptor Flange ISO-K/ISO-KF

③	Size
63D25D	NW 63 - NW 25
63D40D	NW 63 - NW 40
63D50D	NW 63 - NW 50
100D40D	NW 100 - NW 40
160D40D	NW 160 - NW 40

④	Grade
B	Natural (General)
E	EP Grade

⑤	Material
SS	Stainless steel 304

⑥	Option1
N	No Option

⑦	Option2
U	UCV Cleaning
H	HV Cleaning

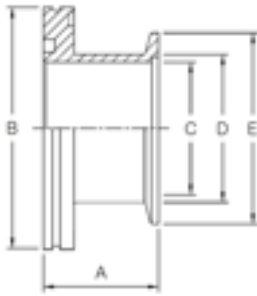
  

⑧	Option3
P	Provide as 1Pcs
S	Provide as 4Pcs=1Set

# ISO-K Clamp Flange Components

## Transition Pieces

### Adaptor Flange ISO-K/ISO-KF



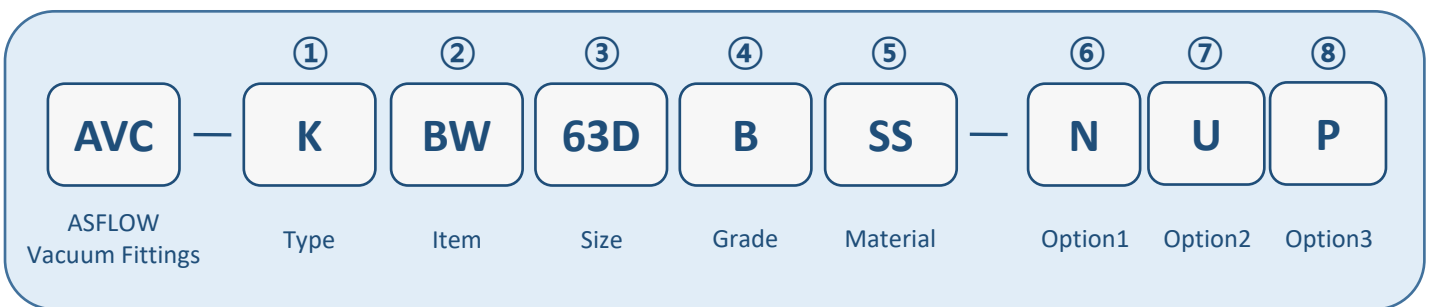
NW	Part No. (Basic)	A	B	C	D	E
63 / 25	AVC-KADF63D25DBSS	50	95	22.1	25.4	40
63 / 40	AVC-KADF63D40DBSS	40	95	34.8	38.1	55
63 / 50	AVC-KADF63D50DBSS	45	95	47.5	50.8	75
100 / 40	AVC-KADF100D40DBSS	40	130	34.8	38.1	55
160 / 40	AVC-KADF160D40DBSS	79	180	34.8	38.1	55

- \* Stainless steel 304
- \* Option 1 : N (No Option)
- \* Option 2 : U (UCV Cleaning)  
H (HV Cleaning)
- \* Option 3 : P (Provide as 1Pcs)  
S (Provide as 4Pcs=1Set)

# ISO-K Clamp Flange Components

## Bellows

### HOW TO ORDER



①	Type
K	ISO-K Clamp Flange Components

②	Item
BW	Bellows

③	Size
63D	NW 63
80D	NW 80
100D	NW 100
160D	NW 160
200D	NW 200
250D	NW 250

④	Grade
B	Natural (General)
E	EP Grade

⑤	Material
SS	Stainless steel 304

⑥	Option1
N	No Option

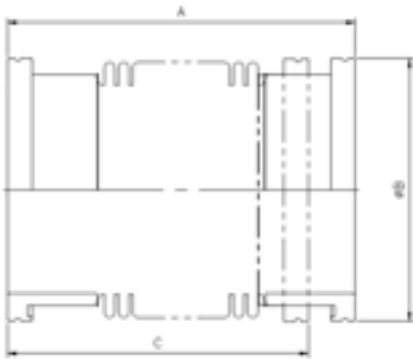
⑦	Option2
U	UCV Cleaning
H	HV Cleaning

⑧	Option3
P	Provide as 1Pcs
S	Provide as 4Pcs=1Set

# ISO-K Clamp Flange Components

## Bellows

### Bellows



- \* A = Unstressed length
- \* C = stressed length

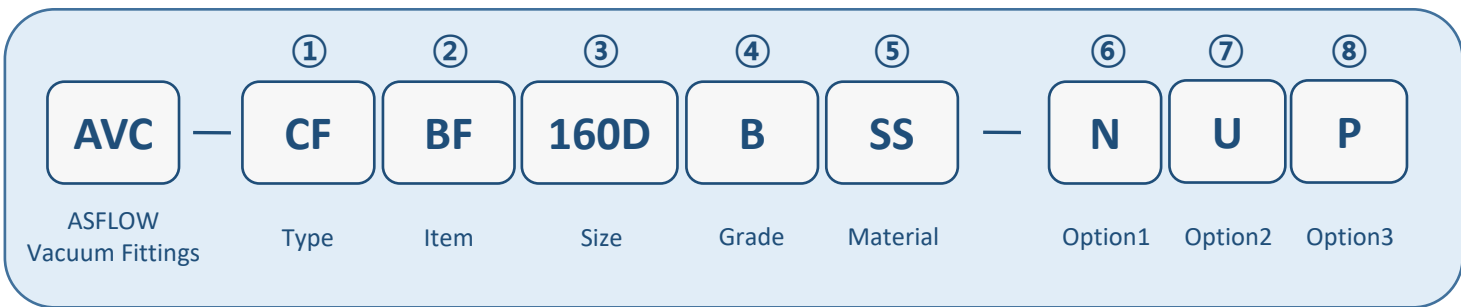
NW	Part No. (Basic)	A	B	C	REMARK
63	AVC-KBW63DBSS	132	95	111	
80	AVC-KBW80DBSS	100	110	88	
80	AVC-KBW80DBSS-5.9	150	110	123	
100	AVC-KBW100DBSS	132	130	111	
100	AVC-KBW100DBSS-5.9	150	130	123	
160	AVC-KBW160DBSS	150	180	123	
160	AVC-KBW160DBSS-7.0	178	180	143	
200	AVC-KBW200DBSS	150	240	123	
200	AVC-KBW200DBSS-9.8	249	240	193	
250	AVC-KBW250DBSS	150	290	123	
250	AVC-KBW250DBSS-11.8	300	290	228	
250	AVC-KBW250DBSS-11.22	285	290	218	
250	AVC-KBW250DBSS-200L	200	290	158	

- \* Flanges : Stainless steel 304
- Bellows : Stainless steel 304
- \* Option 1 : N (No Option)
- \* Option 2 : U (UCV Cleaning)  
H (HV Cleaning)
- \* Option 3 : P (Provide as 1Pcs)  
S (Provide as 4Pcs=1Set)

# UHV CF Components

## Flanges

### HOW TO ORDER



①	Type
CF	UHV CF Components

②	Item
BF	Blank Flange

③	Size
16D	NW 16
40D	NW 40
63D	NW 63
100D	NW 100
160D	NW 160
200D	NW 200
250D	NW 250

④	Grade
B	Natural (General)
E	EP Grade

⑤	Material
SS	Stainless steel 304

⑥	Option1
N	No Option

⑦	Option2
U	UCV Cleaning
H	HV Cleaning

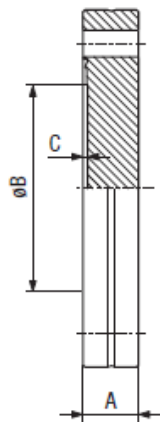
  

⑧	Option3
P	Provide as 1Pcs
S	Provide as 4Pcs=1Set

# UHV CF Components

## Flanges

### Blank Flange



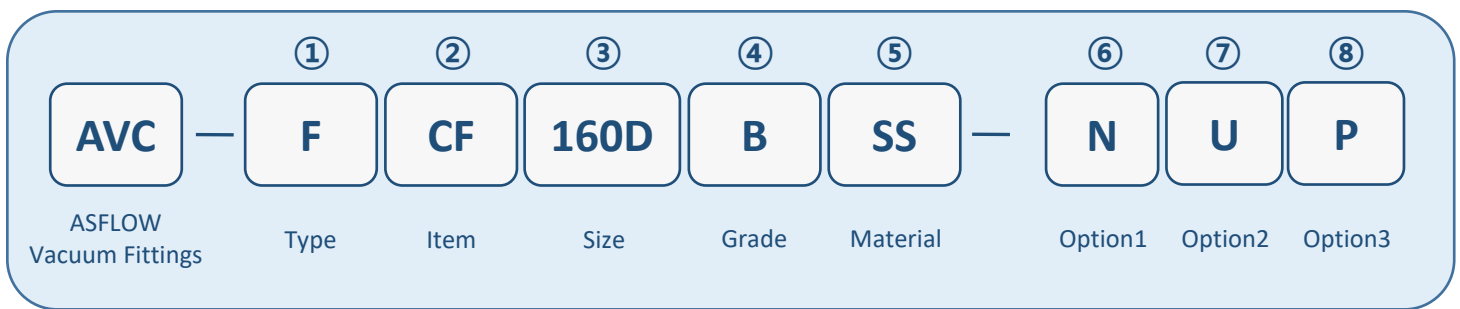
NW	Part No. (Basic)	A	B	C		
16	AVC-CFBF16DBSS	7.5	14	1.4		
40	AVC-CFBF40DBSS	13	38	1.4		
63	AVC-CFBF63DBSS	17.5	66	1.4		
100	AVC-CFBF100DBSS	20	104	1.4		
160	AVC-CFBF160DBSS	22	155	1.4		
200	AVC-CFBF200DBSS	24.5	206	1.4		
250	AVC-CFBF250DBSS	24.5	256	1.4		

- \* Stainless steel 304
- \* Option 1 : N (No Option)
- \* Option 2 : U (UCV Cleaning)  
H (HV Cleaning)
- \* Option 3 : P (Provide as 1Pcs)  
S (Provide as 4Pcs=1Set)

# ISO-F Fixed Flange Components

## Flange Components

### HOW TO ORDER



①	Type
F	ISO-F Fixed Flange Components

②	Item
CF	Collar Flange With Retaining Ring

③	Size
63D	NW 63
80D	NW 80
100D	NW 100
160D	NW 160
200D	NW 200
250D	NW 250

④	Grade
B	Natural (General)
E	EP Grade

⑤	Material
SS	Stainless steel 304

⑥	Option1
N	No Option

⑦	Option2
U	UCV Cleaning
H	HV Cleaning

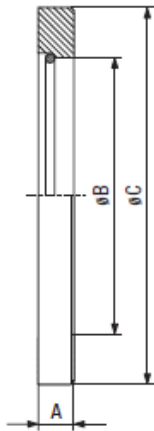
  

⑧	Option3
P	Provide as 1Pcs
S	Provide as 4Pcs=1Set

# ISO-F Fixed Flange Components

## Flange Components

### Collar Flange With Retaining Ring



NW	Part No. (Basic)	A	B	C		
63	AVC-FCF63DBSS	12	95.5	130		
80	AVC-FCF80DBSS	12	110.5	145		
100	AVC-FCF100DBSS	12	130.5	165		
160	AVC-FCF160DBSS	16	180.7	225		
200	AVC-FCF200DBSS	16	240.7	285		
250	AVC-FCF250DBSS	16	290.7	335		

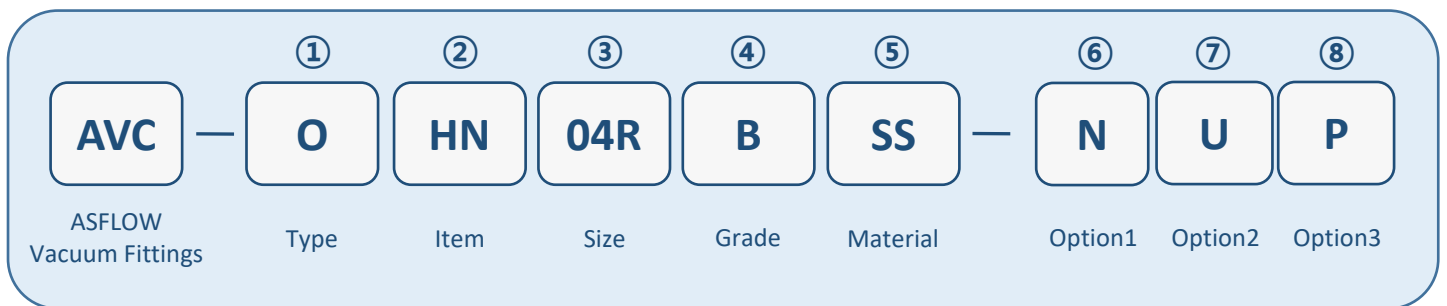
- \* Flange : Stainless steel 304
- Retaining ring : Stainless steel 304
- \* Option 1 : N (No Option)
- \* Option 2 : U (UCV Cleaning)  
H (HV Cleaning)
- \* Option 3 : P (Provide as 1Pcs)  
S (Provide as 4Pcs=1Set)



# Vacuum Components - Others

## Connection Elements

### HOW TO ORDER



①	Type
O	Vacuum Components - Others

②	Item
HN	Hex Nipple
RN	Rectangle Nut

③	Size
04R	1/4" PT
06R	3/8" PT
06M	06 MM
08R	1/2" PT
12R	3/4" PT
16R	1" PT

④	Grade
B	Natural (General)
E	EP Grade

⑤	Material
SS	Stainless steel 316
CS	Carbon steel

⑥	Option1
N	No Option

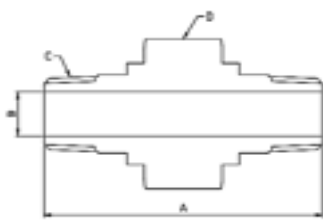
⑦	Option2
U	UCV Cleaning
H	HV Cleaning

⑧	Option3
P	Provide as 1Pcs
S	Provide as 4Pcs=1Set

# Vacuum Components - Others

## Connection Elements

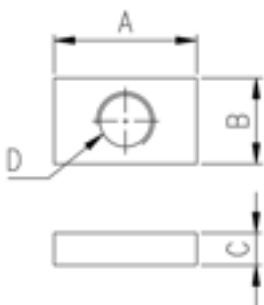
### Hex Nipple



INCH	Part No. (Basic)	A	B	C	D
04R	AVC-OHN04RBSS	50	7.53	1/4" PT	26.98
06R	AVC-OHN06RBSS	50	10	3/8" PT	26.98
08R	AVC-OHN08RBSS	50	10.22	1/2" PT	26.98
12R	AVC-OHN12RBSS	60	15.75	3/4" PT	28.57
16R	AVC-OHN16RBSS	65	22.1	1" PT	34.92

- \* Stainless steel 316
- \* Option 1 : N (No Option)
- \* Option 2 : U (UCV Cleaning)  
H (HV Cleaning)
- \* Option 3 : P (Provide as 1Pcs)  
S (Provide as 4Pcs=1Set)

### Rectangle Nut



\* D : Tapped hole

Millimeter	Part No. (Basic)	A	B	C	D
06M	AVC-ORN06MBCS	20	12	4.5	M6

- \* Carbon steel (SWCH1010) & Nickel plated
- \* Option 1 : N (No Option)
- \* Option 2 : U (UCV Cleaning)  
H (HV Cleaning)
- \* Option 3 : P (Provide as 1Pcs)  
S (Provide as 4Pcs=1Set)

# Vacuum Components - Others

## Connection Elements - Reducer

### HOW TO ORDER

AVC — O RHN 06R04R B SS — N U P

ASFLOW Vacuum Fittings    Type    Item    Size    Grade    Material    Option1    Option2    Option3

①	Type
O	Vacuum Components - Others

②	Item
RHN	Reducing Hex Nipple

③	Size
06R04R	3/8" PT - 1/4" PT
08R04R	1/2" PT - 1/4" PT
08R06R	1/2" PT - 3/8" PT
12R04R	3/4" PT - 1/4" PT
12R08R	3/4" PT - 1/2" PT

④	Grade
B	Natural (General)
E	EP Grade

⑤	Material
SS	Stainless steel 316

⑥	Option1
N	No Option

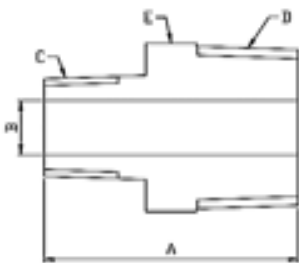
⑦	Option2
U	UCV Cleaning
H	HV Cleaning

⑧	Option3
P	Provide as 1Pcs
S	Provide as 4Pcs=1Set

# Vacuum Components - Others

## Connection Elements - Reducer

### Reducing Hex Nipple



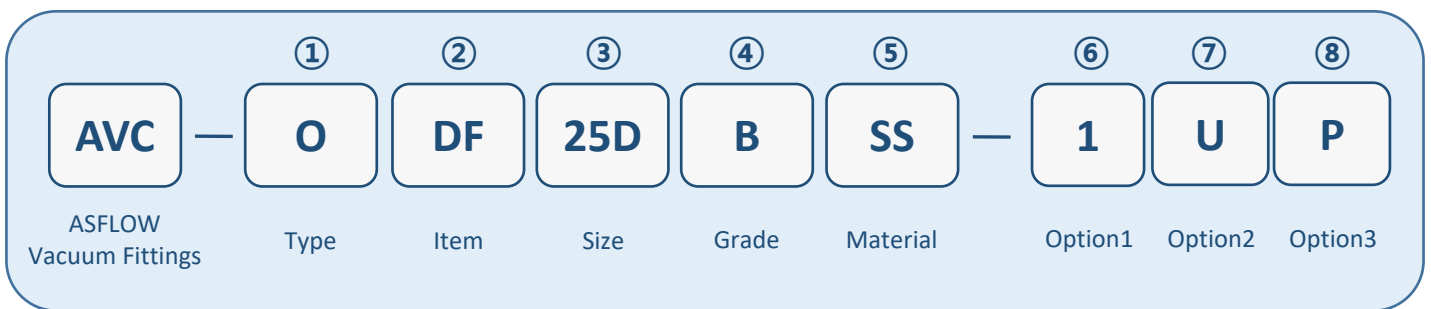
INCH	Part No. (Basic)	A	B	C	D	E
06R04R	AVC-ORHN06R04RBSS	35	7.53	1/4" PT	3/8" PT	17.46
08R04R	AVC-ORHN08R04RBSS	37.5	7.53	1/4" PT	1/2" PT	22.22
08R06R	AVC-ORHN08R06RBSS	37.5	10	3/8" PT	1/2" PT	22.22
12R04R	AVC-ORHN12R04RBSS	45	7.53	1/4" PT	3/4" PT	26.98
12R08R	AVC-ORHN12R08RBSS	45	10.22	1/2" PT	3/4" PT	26.98

- \* Stainless steel 316
- \* Option 1 : N (No Option)
- \* Option 2 : U (UCV Cleaning)  
H (HV Cleaning)
- \* Option 3 : P (Provide as 1Pcs)  
S (Provide as 4Pcs=1Set)

# Vacuum Components - Others

## Diffuser

### HOW TO ORDER



①	Type
O	Vacuum Components - Others

②	Item
DF	Diffuser

③	Size
25D	NW 25

④	Grade
B	Natural (General)
E	EP Grade

⑤	Material
SS	Stainless steel 316

⑥	Option1
N	No Option
1	Membrane Ø 20
2	Membrane Ø 30

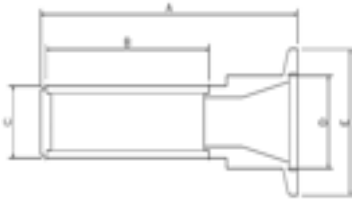
⑦	Option2
U	UCV Cleaning
H	HV Cleaning

⑧	Option3
P	Provide as 1Pcs
S	Provide as 4Pcs=1Set

# Vacuum Components - Others

## Diffuser

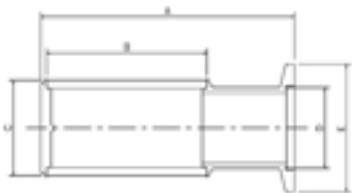
### Diffuser



NW	Part No. (Basic)	A	B	C	D	E
25	AVC-ODF25DBSS-1	87	55	19.7	25.4	40

- \* Body : Stainless steel 316
- \* Membrane : Stainless steel 316
- \* Option 1 : 1 (Membrane  $\varnothing$  20)
- \* Option 2 : U (UCV Cleaning)  
H (HV Cleaning)
- \* Option 3 : P (Provide as 1Pcs)  
S (Provide as 4Pcs=1Set)

### Diffuser



NW	Part No. (Basic)	A	B	C	D	E
25	AVC-ODF25DBSS-2	87	55	30.8	25.4	40

- \* Body : Stainless steel 316
- \* Membrane : Stainless steel 316
- \* Option 1 : 2 (Membrane  $\varnothing$  30)
- \* Option 2 : U (UCV Cleaning)  
H (HV Cleaning)
- \* Option 3 : P (Provide as 1Pcs)  
S (Provide as 4Pcs=1Set)

# Vacuum Components – Special order

## Coolant Line

### HOW TO ORDER

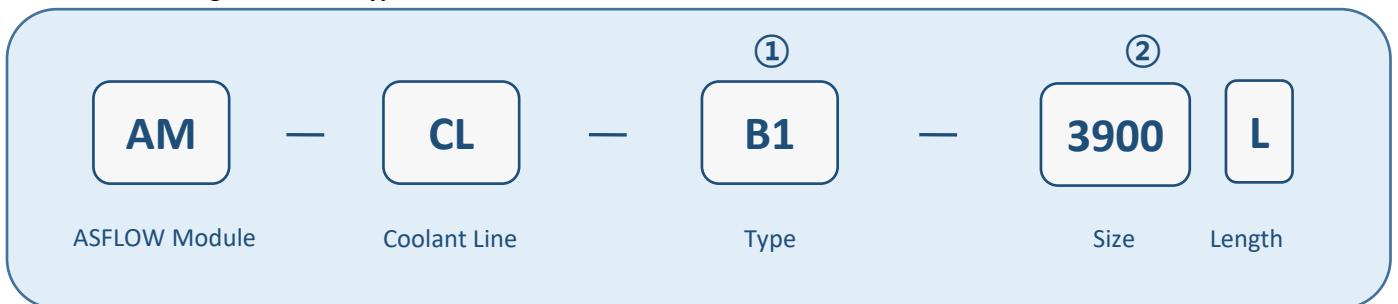
\* DKO Fitting **Straight** Line Type



①	Size
3400L	PTFE Flexible Line Size + Length
3650L	PTFE Flexible Line Size + Length

### HOW TO ORDER

\* DKO Fitting **Elbow** Line Type



①	Type
B1	DKO Fitting Elbow Line Type

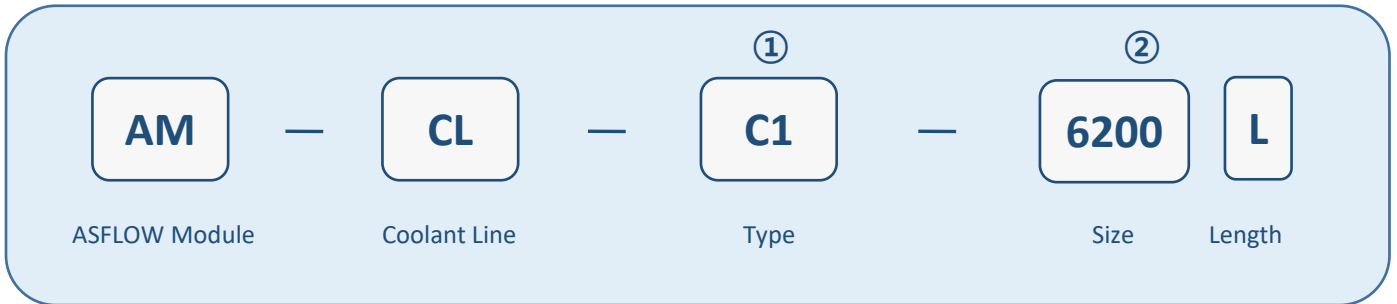
②	Size
3900L	PTFE Flexible Line Size + Length
4150L	PTFE Flexible Line Size + Length

# Vacuum Components – Special order

## Coolant Line

**HOW TO ORDER**

\* DKO Fitting on both sides Line Type



①	Type
C1	DKO Fitting on both sides Line Type

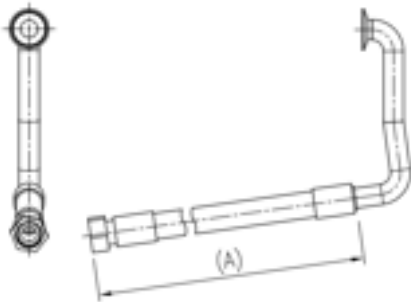
②	Size
6200L	PTFE Flexible Line Size + Length
6500L	PTFE Flexible Line Size + Length



# Vacuum Components – Special order

## Coolant Line

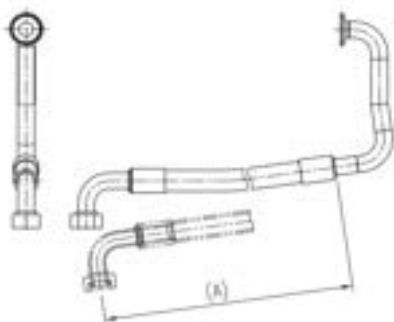
### PTFE Flexible Line (DKO Fitting Straight Line Type)



NW	Part No. (Basic)	A	
25	AM-CL-3400L	3400	
25	AM-CL-3650L	3650	

- \* Body : PTFE Flexible line  $\varnothing 33 - \varnothing 25$
- \* Flexible line : Stainless steel 316
- \* DKO Fitting Straight Line Type (DN25)
- \* This product is a special order. Please contact us directly for more information.

### PTFE Flexible Line (DKO Fitting Elbow Line Type)



NW	Part No. (Basic)	A	
25	AM-CL-B1-3900L	3400	
25	AM-CL-B1-4150L	3650	

- \* Body : PTFE Flexible line  $\varnothing 33 - \varnothing 25$
- \* Flexible line : Stainless steel 316
- \* DKO Fitting elbow Line Type (DN25)
- \* This product is a special order. Please contact us directly for more information.

# Vacuum Components – Special order

## Coolant Line

### PTFE Flexible Line (DKO Fitting on both sides Line Type)

NW	Part No. (Basic)	A	
25	AM-CL-C1-6200L	6200	
25	AM-CL-C1-6500L	6500	



\* Body : PTFE Flexible line  $\varnothing 33 - \varnothing 25$

\* Flexible line : Stainless steel 316

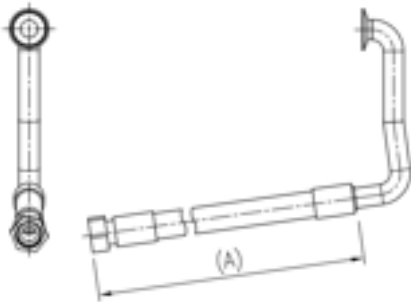
\* DKO Fitting on both sides Line Type(DN25)

\* This product is a special order. Please contact us directly for more information.

# Vacuum Components – Special order

## Coolant Line

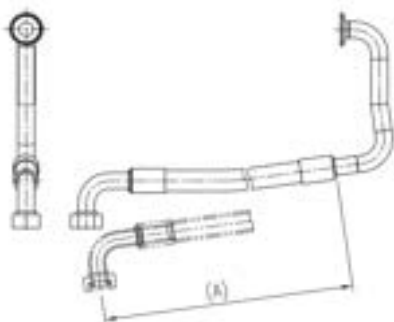
### PTFE Flexible Line (DKO Fitting Straight Line Type)



NW	Part No. (Basic)	A	
25	AM-CL-3400L	3400	
25	AM-CL-3650L	3650	

- \* Body : PTFE Flexible line  $\varnothing 33 - \varnothing 25$
- \* Flexible line : Stainless steel 316
- \* DKO Fitting Straight Line Type (DN25)
- \* This product is a special order. Please contact us directly for more information.

### PTFE Flexible Line (DKO Fitting Elbow Line Type)



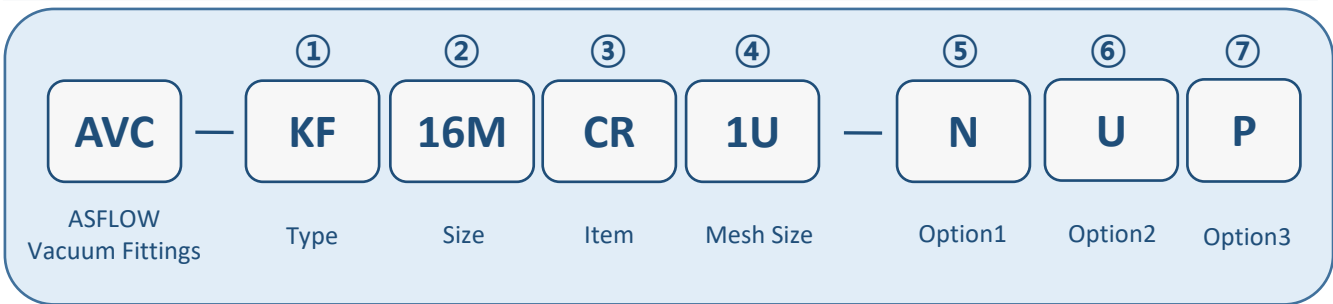
NW	Part No. (Basic)	A	
25	AM-CL-B1-3900L	3400	
25	AM-CL-B1-4150L	3650	

- \* Body : PTFE Flexible line  $\varnothing 33 - \varnothing 25$
- \* Flexible line : Stainless steel 316
- \* DKO Fitting elbow Line Type (DN25)
- \* This product is a special order. Please contact us directly for more information.

# ISO-KF Small Flange Components

## Mech Center Ring

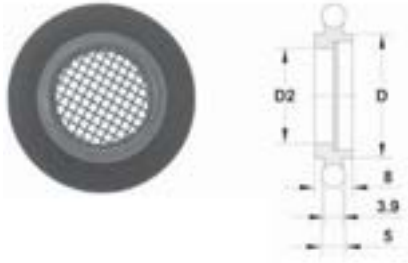
### HOW TO ORDER



①	Type
KF	ISO-KF Small Flange Components
②	Size
16M	NW 16
25M	NW 25
40M	NW 40
50M	NW 50
③	Item
CR	Center Ring

④	Mesh Size
1U	1mm
⑤	Option1
N	No Option
⑥	Option2
U	UCV Cleaning _SUS Only
H	HV Cleaning
⑦	Option3
P	Provide as 1Pcs
S	Provide as 4Pcs=1Set

**Mesh Center Ring**



NW	Part No. (Basic)	D	D2			
16	AVC-KF16MCR1U	17	14			
25	AVC-KF25MCR1U	26	23			
40	AVC-KF40MCR1U	41	38			
50	AVC-KF50MCR1U	52	48			

\* Stainless Steel 304

\* Mesh Size : 1mm

\* Wire Diameter : 0.2mm

\* Temperature Range FKM : -10°C to 150°C

\* Option 1 : N (No Option)

\* Option 2 : U (UCV Cleaning) \_SUS Only  
H (HV Cleaning)

\* Option 3 : P (Provide as 1Pcs)  
S (Provide as 4Pcs=1Set)